

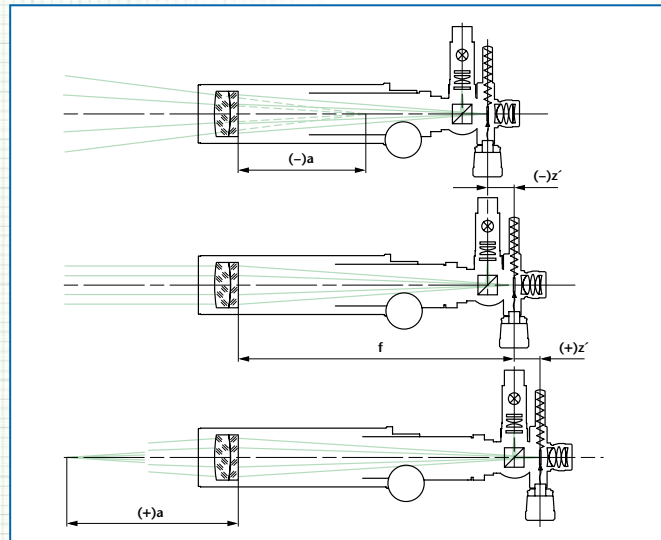
AUTOCOLLIMATORS

FOCUSABLE – STRAIGHT VIEWING WITH DOUBLE MICROMETER

Description:

For a general description of the principle of functioning of focusable autocollimators see page 43.

Additionally, micrometers allow the direct measurement of eyepiece reticle movement. The scale division (SD) of the micrometer drums is 5 μm .



Notes on ordering:

- Optionally, the autocollimators can be equipped with an eyepiece having 10 mm or 25 mm focal length.
- Two reticles, 6V/5W illumination w/cord, and eyepiece are included.
- The nomenclature of the adjustable autocollimators with straight viewing and with double micrometer is as follows:

Example: AK G V 90/ 40/ 14,7 \pm 6 MD

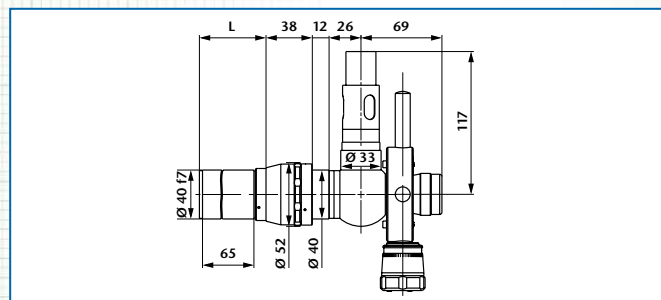
- Autocollimator
- Straight viewing
- Variable
- Focal length
- Tube diameter
- Eyepiece focal length
- Tube extension in mm
- Double micrometer

Important:

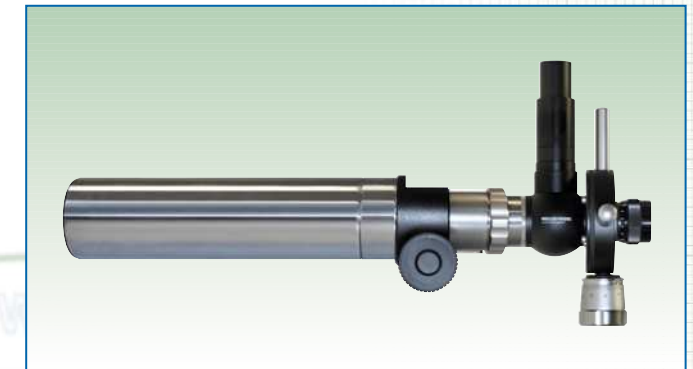
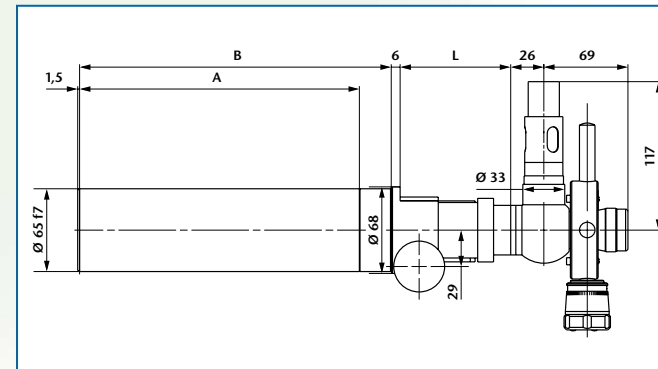
Please specify collimator reticle and eyepiece reticle (see page 82) as well as illumination (LED-, bulb- or cold light, see page 81) when ordering.

Application areas:

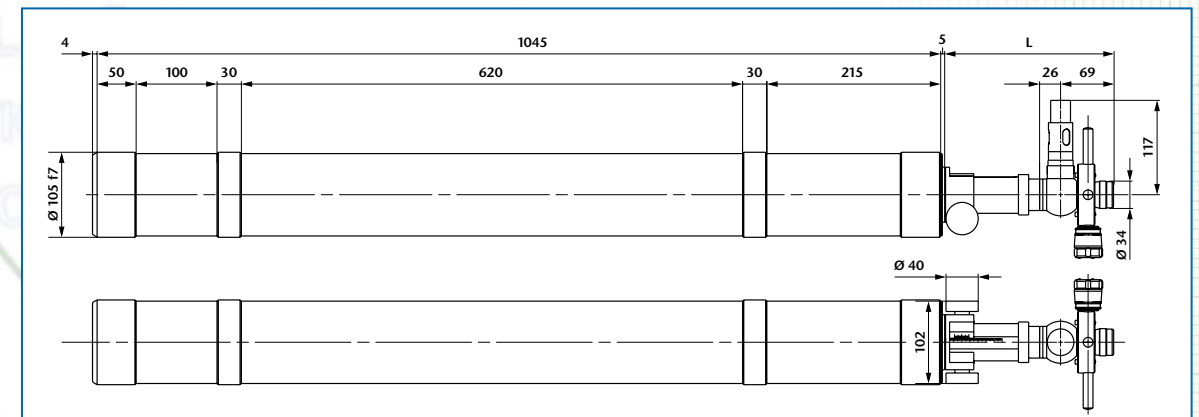
- Measurement of angular tilt
- Qualitative testing of the imaging properties of optical elements and systems
- Measurement of large radii of curvature
- Infinity adjustment to other wavelengths
- Adjustment of optical and mechanical systems



Ord.-No.	Description	Focal length	Free aperture	Tube extension	Meas. range	SD	Distance range	L
229 631	AKGV 90/40/14,7/ \pm 6 MD	90	16	\pm 6	3,0°	5,5"	$-\infty$...-1,25 m 1,40 m... $+\infty$	77 \pm 6
229 632	AKGV 90/40/14,7/+12 MD	90	16	+12	3,0°	5,5"	0,80 m... $+\infty$	71 $^{+12}$
229 633	AKGV 90/40/14,7/-12 MD	90	16	-12	3,0°	5,5"	$-\infty$...-0,60 m	83 $^{-12}$
229 634	AKGV 140/40/14,7/ \pm 6 MD	140	28	\pm 6	2,0°	3,5"	$-\infty$...-3,10 m 3,30 m... $+\infty$	77 \pm 6
229 635	AKGV 140/40/14,7/+12 MD	140	28	+12	2,0°	3,5"	1,70 m... $+\infty$	71 $^{+12}$
229 636	AKGV 140/40/14,7/-12 MD	140	28	-12	2,0°	3,5"	$-\infty$...-1,40 m	83 $^{-12}$



Ord.-No.	Description	Focal length	Free aperture	Tube extension	Meas. range	SD	Distance range	A	B	L
229 640	AKGV 300/65/14,7/ \pm 25 MD	300	50	\pm 25	1,0°	2,0"	$-\infty$...-3,4 m 3,8 m... $+\infty$	220	245	220 \pm 25
229 638	AKGV 300/65/14,7/+50 MD	300	50	+50	1,0°	2,0"	2,1 m... $+\infty$	220	270	195 $^{+50}$
229 639	AKGV 300/65/14,7/-50 MD	300	50	-50	1,0°	2,0"	$-\infty$...-1,5 m	220	220	245 $^{-50}$
229 641	AKGV 500/65/14,7/ \pm 50 MD	500	50	\pm 50	0,5°	1,0"	$-\infty$...-4,5 m 5,4 m... $+\infty$	310	360	245 \pm 50
229 644	AKGV 500/65/14,7/+100 MD	500	50	+100	0,5°	1,0"	3,0 m... $+\infty$	310	410	195 $^{+100}$
229 645	AKGV 500/65/14,7/-100 MD	500	50	-100	0,5°	1,0"	$-\infty$...-1,5 m	310	310	295 $^{-100}$



Ord.-No.	Description	Focal length	Free aperture	Tube extension	Meas. range	SD	Distance range	L
229 642	AKGV 1100/105/14,7/ \pm 50 MD	1100	78	\pm 50	0,25°	0,5"	$-\infty$...-23,70 m 25,80 m... $+\infty$	202 \pm 50
229 646	AKGV 1100/105/14,7/+100 MD	1100	78	+100	0,25°	0,5"	13,20 m... $+\infty$	202 $^{+100}$
229 643	AKGV 1100/105/14,7/-100 MD	1100	78	-100	0,25°	0,5"	$-\infty$...-12,00 m	202 $^{-100}$